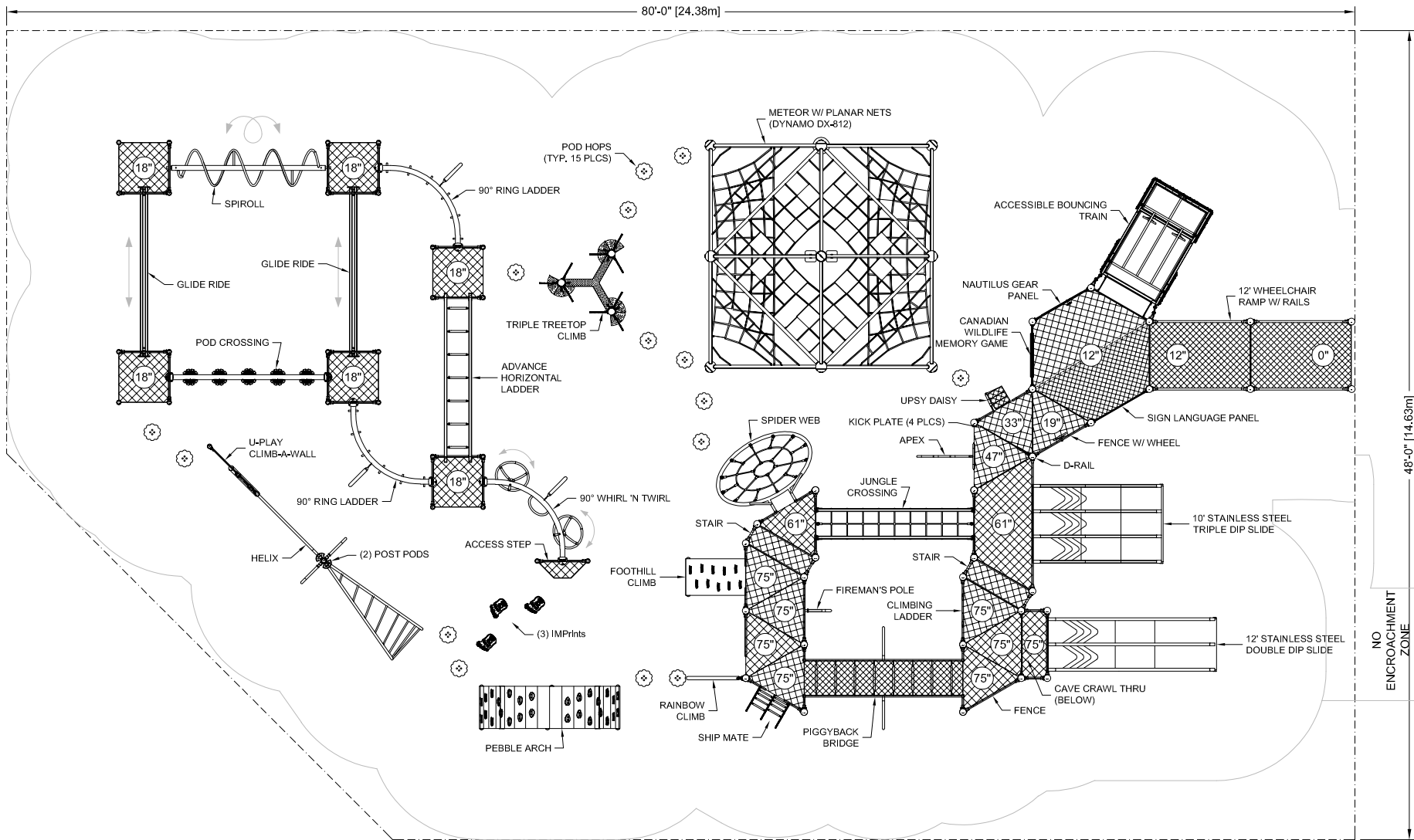


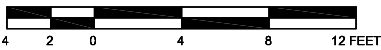
DRAWINGS AND SPECIFICATIONS ARE PROPERTY OF S.F. SCOTT MANUFACTURING. THIS DRAWING MAY NOT BE REPRODUCED IN WHOLE OR IN PART WITHOUT THE PRIOR WRITTEN CONSENT OF THE ENGINEERING DEPARTMENT



80'-0" [24.38m]

48'-0" [14.63m]

NO ENCROACHMENT ZONE



BLUE IMP SLIDES MUST BE INSTALLED WITH SLIDE BEDS FACING BETWEEN NORTH AND EAST

- CONFORMS TO THE CAN/CSA-Z614-20 STANDARD "CHILDREN'S PLAYGROUND EQUIPMENT AND SURFACING"
- PERIMETER SHOWN REPRESENTS EXTENT OF REQUIRED SAFETY SURFACING. WIDTH OF BORDER MATERIAL MUST BE ADDED BEFORE EXCAVATION.

LAYOUT #: M11318-2
 JOB #:
 RECOMMENDED AGES: 5-12
 PROTECTIVE SURFACING REQUIRED:
 AREA: 3578 (sq.ft) PERIMETER: 243 (ft)
 DRAWN BY: TD DATE: 09-DEC-21

2	SAUCER TONES TO POD CROSSING, STEPPING SAUCERS TO POD HOPS.	AS	11-JUL-23
1	UPDATED WHEELCHAIR RAMP	TD	16-MAY-22

724 - 14TH STREET S.W., MEDICINE HAT, AB. T1A 4V7
 TOLL FREE: 1-800-661-1462 FAX: (403) 529-0851
 E-MAIL: sales@blueimp.com WEBSITE: www.blueimp.com