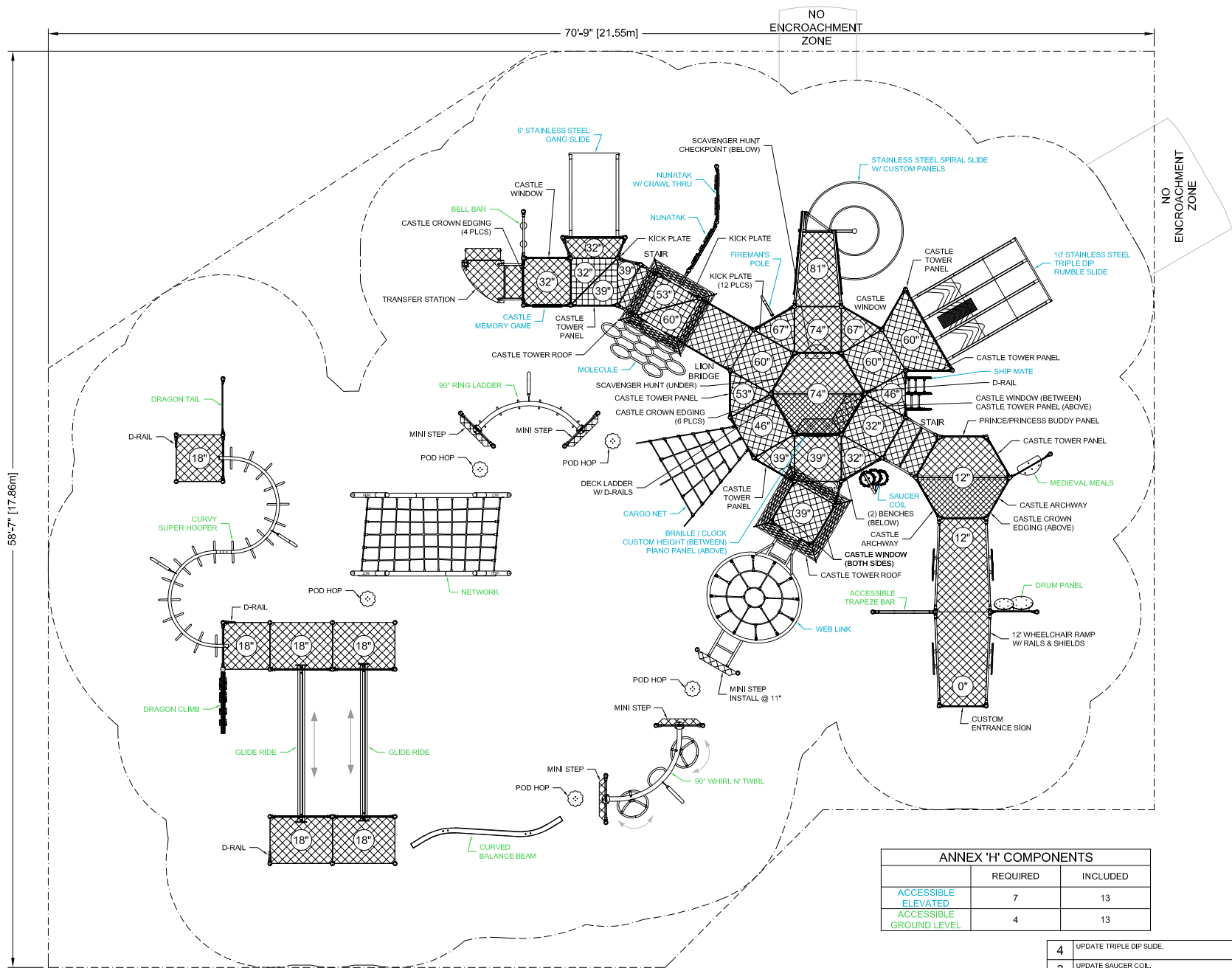


DRAWINGS AND SPECIFICATIONS ARE PROPERTY OF S.F. SCOTT MANUFACTURING. THIS DRAWING MAY NOT BE REPRODUCED IN WHOLE OR IN PART WITHOUT THE PRIOR WRITTEN CONSENT OF THE ENGINEERING DEPARTMENT



ANNEX 'H' COMPONENTS		
	REQUIRED	INCLUDED
ACCESSIBLE ELEVATED	7	13
ACCESSIBLE GROUND LEVEL	4	13

4	UPDATE TRIPLE DIP SLIDE.	EH	30-NOV-23
3	UPDATE SAUCER COIL.	EH	25-MAY-23
2	UPDATE XREFS. SAUCERS TO POD HOPS. ADJUST BORDER.	KH	15-NOV-22
1	UPDATED WHEELCHAIR RAMP	TD	16-MAY-22

  
 BLUE IMP SLIDES MUST BE INSTALLED WITH SLIDE BEDS FACING BETWEEN NORTH AND EAST

- CONFORMS TO THE CAN/CSA-Z614-20 STANDARD "CHILDREN'S PLAYGROUND EQUIPMENT AND SURFACING"
- PERIMETER SHOWN REPRESENTS EXTENT OF REQUIRED SAFETY SURFACING. WIDTH OF BORDER MATERIAL MUST BE ADDED BEFORE EXCAVATION.
- CONFORMS TO ANNEX 'H' OF THE CAN/CSA-Z614-20 STANDARD "CHILDREN'S PLAYGROUND EQUIPMENT AND SURFACING" (SUBJECT TO THE PRESENCE OF ACCESSIBLE SURFACING)

LAYOUT #: I11285-4  
 JOB #:  
 RECOMMENDED AGES: 5-12  
 PROTECTIVE SURFACING REQUIRED:  
 AREA: 3563 (sq.ft) PERIMETER: 239 (ft)  
 DRAWN BY: AS DATE: 30-NOV-21



**Blue Imp**  
 PLAY STRONG

724 - 14TH STREET S.W., MEDICINE HAT, AB. T1A 4V7  
 TOLL FREE: 1-800-661-1462 FAX: (403) 529-0851  
 E-MAIL: sales@blueimp.com WEBSITE: www.blueimp.com