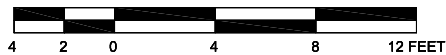
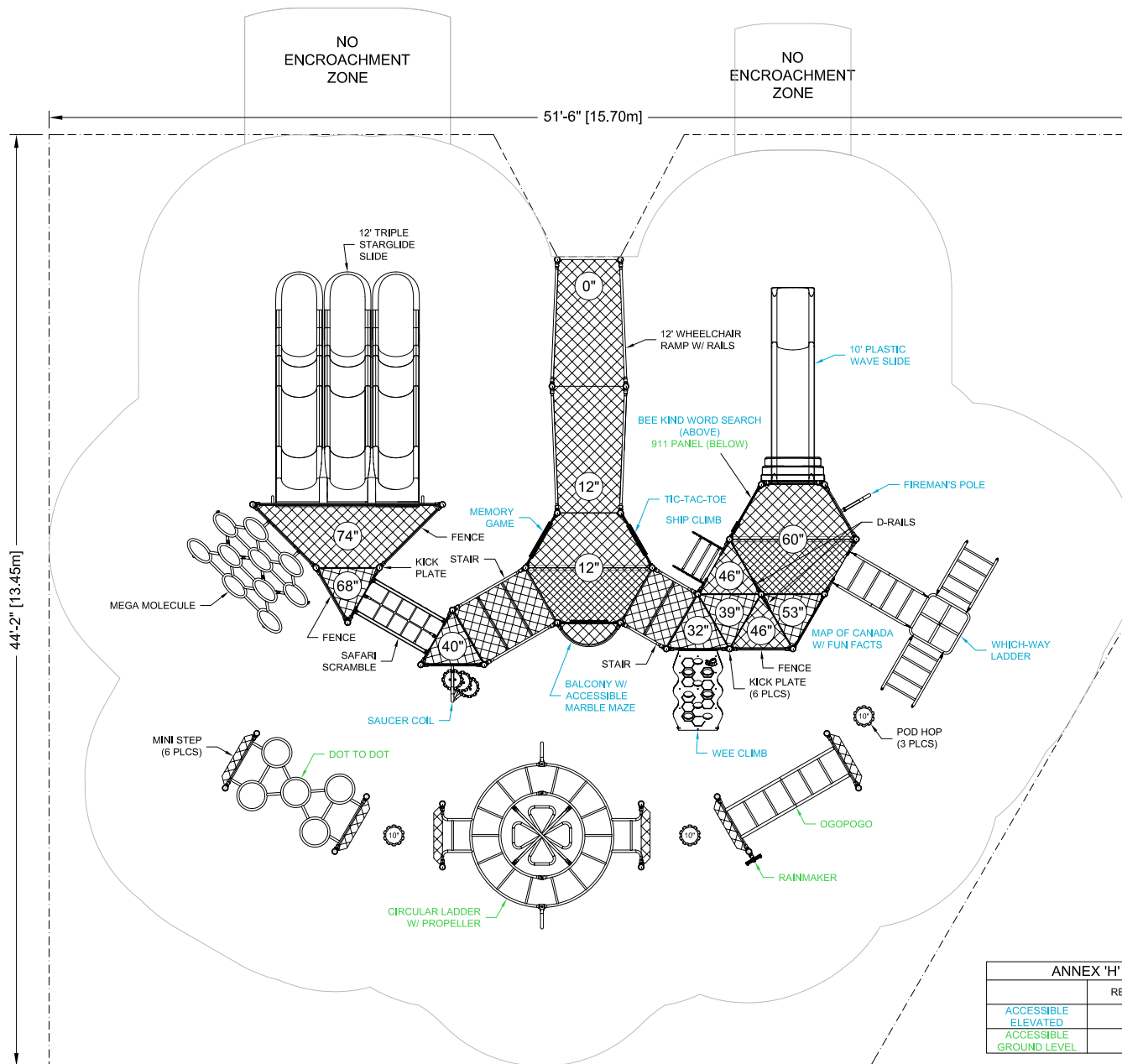




FALL HEIGHT:  
112"

See CAN/CSA Z614-20 for  
Protective Surfacing Requirements  
and Recommendations.



ANNEX 'H' COMPONENTS		
	REQUIRED	INCLUDED
ACCESSIBLE ELEVATED	7	11
ACCESSIBLE GROUND LEVEL	5	5



BLUE IMP SLIDES MUST BE  
INSTALLED WITH SLIDE  
BEDS FACING BETWEEN  
NORTH AND EAST

- CONFORMS TO THE CAN/CSA-Z614-20 STANDARD "CHILDREN'S PLAYGROUND EQUIPMENT AND SURFACING"
- PERIMETER SHOWN REPRESENTS EXTENT OF REQUIRED SAFETY SURFACING. WIDTH OF BORDER MATERIAL MUST BE ADDED BEFORE EXCAVATION.
- CONFORMS TO ANNEX 'H' OF THE CAN/CSA-Z614-20 STANDARD "CHILDREN'S PLAYGROUND EQUIPMENT AND SURFACING" (SUBJECT TO THE PRESENCE OF ACCESSIBLE SURFACING)

LAYOUT #: I16535  
JOB #:

RECOMMENDED AGES: 5-12

PROTECTIVE SURFACING REQUIRED:  
AREA: 2102 (sq.ft) PERIMETER: 190 (ft)

DRAWN BY: AS DATE: 13-NOV-25



724 - 14TH STREET S.W., MEDICINE HAT, AB. T1A 4V7  
TOLL FREE: 1-800-661-1462 FAX: (403) 529-0851  
E-MAIL: sales@blueimp.com WEBSITE: www.blueimp.com