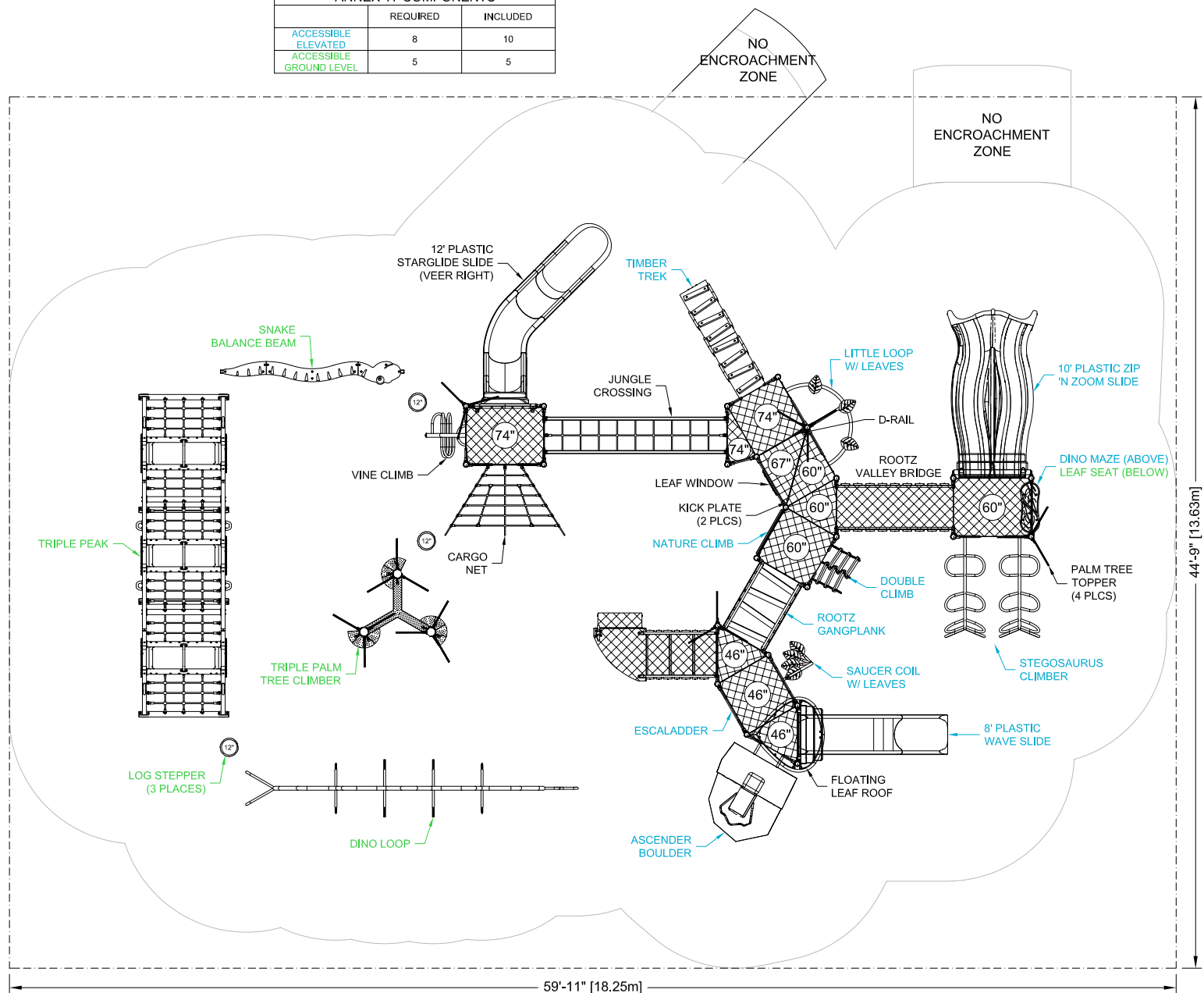




ANNEX 'H' COMPONENTS		
	REQUIRED	INCLUDED
ACCESSIBLE ELEVATED	8	10
ACCESSIBLE GROUND LEVEL	5	5

FALL HEIGHT: 112"	See CAN/CSA Z614-20 for Protective Surfacing Requirements and Recommendations.
-----------------------------	--



- CONFORMS TO THE CAN/CSA-Z614-20 STANDARD "CHILDREN'S PLAYGROUND EQUIPMENT AND SURFACING"
- PERIMETER SHOWN REPRESENTS EXTENT OF REQUIRED SAFETY SURFACING. WIDTH OF BORDER MATERIAL MUST BE ADDED BEFORE EXCAVATION.
- CONFORMS TO ANNEX 'H' OF THE CAN/CSA-Z614-20 STANDARD "CHILDREN'S PLAYGROUND EQUIPMENT AND SURFACING" (SUBJECT TO THE PRESENCE OF ACCESSIBLE SURFACING)

BLUE IMP RECOMMENDS
THAT SLIDES BE INSTALLED
WITH SLIDE BEDS FACING
BETWEEN NORTH AND EAST

LAYOUT #: I16525
JOB #:

RECOMMENDED AGES: 18M-12Y

PROTECTIVE SURFACING REQUIRED:
AREA: 2678 (sq.ft) PERIMETER: 210 (ft)

DRAWN BY: KH DATE: 12-NOV-25



724 - 14TH STREET S.W., MEDICINE HAT, AB. T1A 4V7
TOLL FREE: 1-800-661-1462 FAX: (403) 529-0851
E-MAIL: sales@blueimp.com WEBSITE: www.blueimp.com