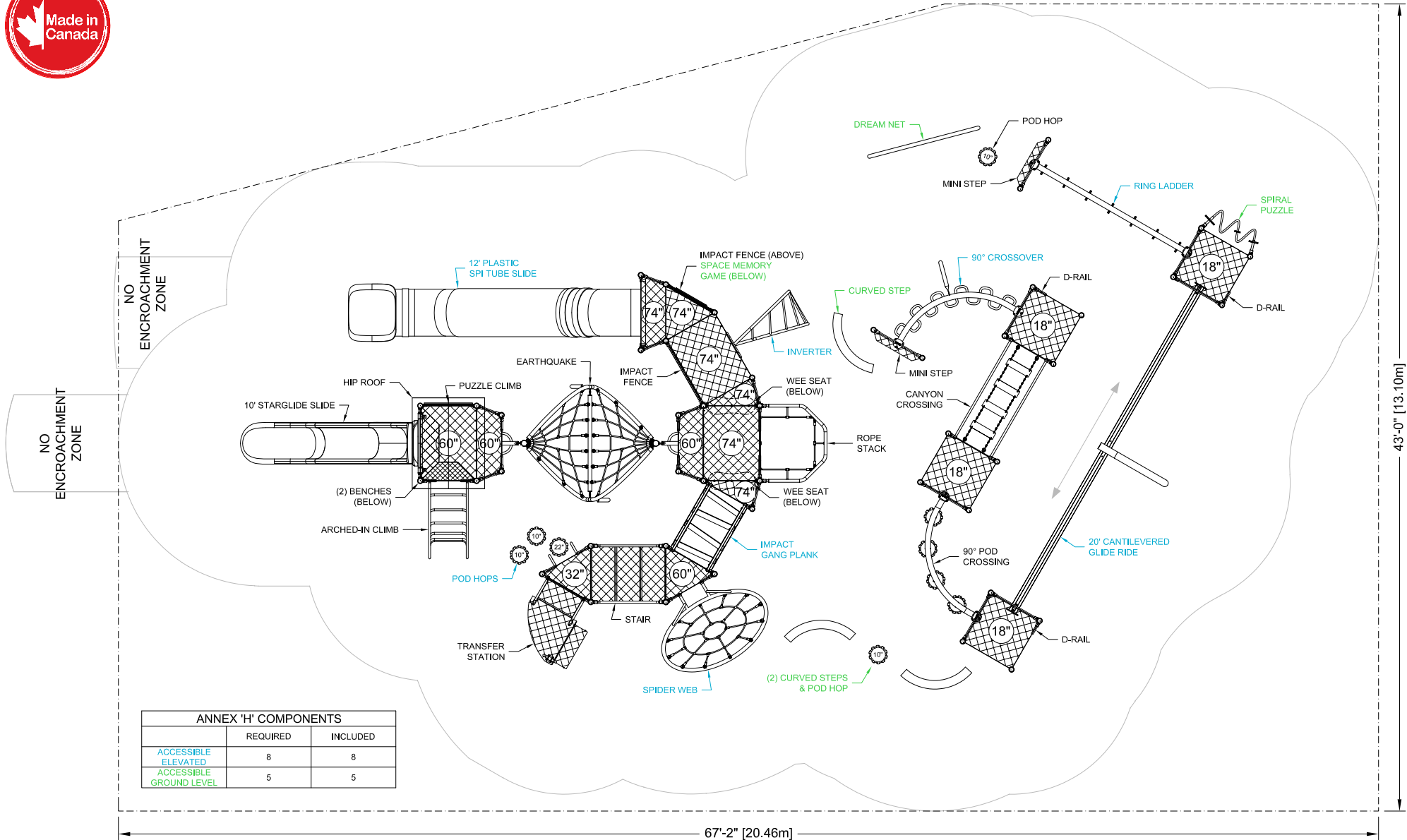


DRAWINGS AND SPECIFICATIONS ARE PROPERTY OF S.F. SCOTT MANUFACTURING. THIS DRAWING MAY NOT BE REPRODUCED IN WHOLE OR IN PART WITHOUT THE PRIOR WRITTEN CONSENT OF THE ENGINEERING DEPARTMENT



FALL HEIGHT: 112"
See CAN/CSA Z614-20 for Protective Surfacing Requirements and Recommendations.



ANNEX 'H' COMPONENTS		
	REQUIRED	INCLUDED
ACCESSIBLE ELEVATED	8	8
ACCESSIBLE GROUND LEVEL	5	5



BLUE IMP SLIDES MUST BE INSTALLED WITH SLIDE BEDS FACING BETWEEN NORTH AND EAST

- CONFORMS TO THE CAN/CSA-Z614-20 STANDARD "CHILDREN'S PLAYGROUND EQUIPMENT AND SURFACING"
- PERIMETER SHOWN REPRESENTS EXTENT OF REQUIRED SAFETY SURFACING. WIDTH OF BORDER MATERIAL MUST BE ADDED BEFORE EXCAVATION.
- CONFORMS TO ANNEX 'H' OF THE CAN/CSA-Z614-20 STANDARD "CHILDREN'S PLAYGROUND EQUIPMENT AND SURFACING" (SUBJECT TO THE PRESENCE OF ACCESSIBLE SURFACING)

LAYOUT #: I16534
JOB #:
RECOMMENDED AGES: 5-12
PROTECTIVE SURFACING REQUIRED:
AREA: 2632 (sq.ft) PERIMETER: 211 (ft)
DRAWN BY: AS DATE: 13-NOV-25



Blue Imp
PLAY STRONG

724 - 14TH STREET S.W., MEDICINE HAT, AB. T1A 4V7
TOLL FREE: 1-800-661-1462 FAX: (403) 529-0851
E-MAIL: sales@blueimp.com WEBSITE: www.blueimp.com